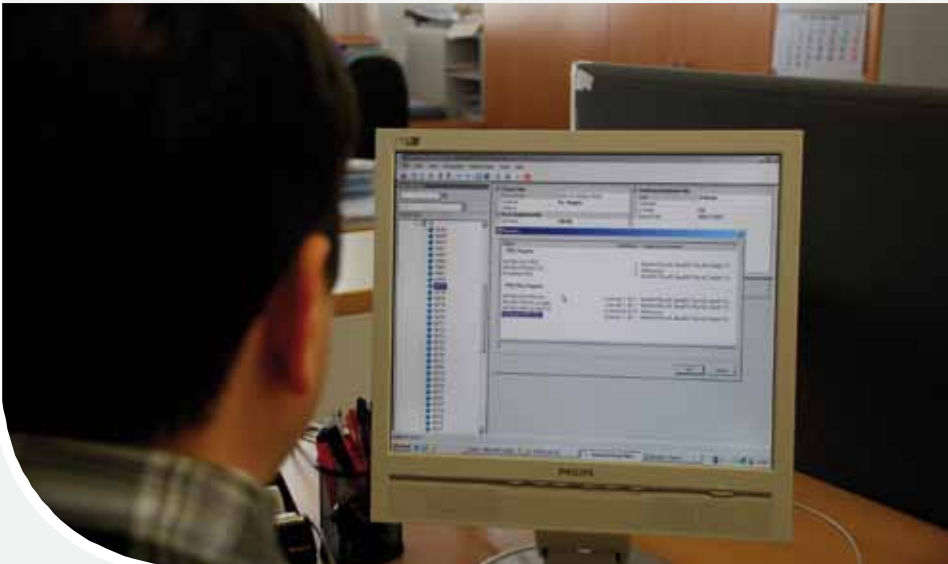


PATLink PRO

Powerful PC software for PAT testing results analysis and creation of professional test reports



PC software PATLink PRO is an advanced, user friendly software package designed with the portable appliance testing engineer in mind. The graphical interface with drag and drop data relocation facility, data filtering, data archiving functions and automatic report generation allows a variety of users with a range of different skills and abilities to create professional reports which include company logos. The PATLink PRO Plus software introduces extra features including the ability to reload data onto Metrel uploadable / downloadable testers, perform trend analysis on equipment and introduces PRO Plus certificates and individual appliance reports.

Key features:

- **Full data filtering:** All data can be filtered by different parameters: Retest Date, Test Date, Project, User, etc.
- **Tree style or table style:** Data can be represented in tree or table view.
- **Drag and drop:** The elements of the structure can be relocated and renamed.
- **Customer database:** Test engineer can create his own database of customers fully equipped with all appropriate data.
- **Company logo loading:** Load company logos into the software so that they can be printed on test reports.
- **Data backup:** All downloaded data can be backed up to prevent the loss of valuable data for example in case of hard disk failure.
- **Appliance information editing:** Allows you to edit data, e.g. to set up Retest Date, Repair Code, add Comments, etc.
- **Export of test results:** Data of selected appliances together with test results can be exported to other programs (MS Excel, MS Word).
- **PDF report:** Test Report can be transformed into PDF format.
- **Full built-in help files:** Integrated help menu contains detailed explanation of PC SW handling.
- **Automatic self-test record keeping (MI 3311 only):** Results of the CHECKBOX function can be automatically transferred to the PC and printed onto the test reports.
- **"Plug & Play":** When meter is connected to the PC it is automatically recognized by the software.
- **Upload data back to PAT tester (MI 3321, MI 3305, MI 3304, MI 3310A, MI 3310):** User can upload test results from the previous measurement session (e.g. from last year) so the same tests can be simply repeated and results of both measurements can be compared.
- **Autosequences upload:** Test autosequences can be prepared via PATLink PRO and then sent to the tester (MI 3321, MI 3305, MI 3304, MI 3310A, MI 3310, MI 3309, MI 3311) for testing speedup.
- **Structures upload:** The structure of test site can be created in advance on the PC and then simply uploaded to the tester (MI 3321, MI 3305, MI 3304, MI 3310A, MI 3310); if needed any deviations can be adjusted on the tester on site.
- **Trend analysis:** Enables to compare test results of the last and previous tests.
- **Automatic PRO report generation:** Enables automatic generation of Test Report (standard or full detailed).
- **PATLink PRO Plus professional reports:** The PRO Plus report displays results as the PRO version but enables editing the information before printing the report.

PC SW PATLink PRO / PRO Plus is compatible with:

- MI 3321 MultiservicerXA
- MI 2170 Multiservicer
- MI 3305 OmegaPAT Plus
- MI 3304 BetaPAT Plus
- MI 3310 / MI 3310A SigmaGT
- MI 3309 Delta GT
- MI 3311 GammaGT

The following Certificates for PRO version are available:

- Full detailed PRO Electrical equipment test report;
- METREL PAT PRO Electrical equipment test report.
- The following Certificates for PRO Plus version are available:
- METREL PRO Plus (Single) Electrical equipment test report;
- METREL Full detailed PRO Electrical equipment test report;
- METREL PAT PRO Plus Electrical equipment test report.

Password protection:

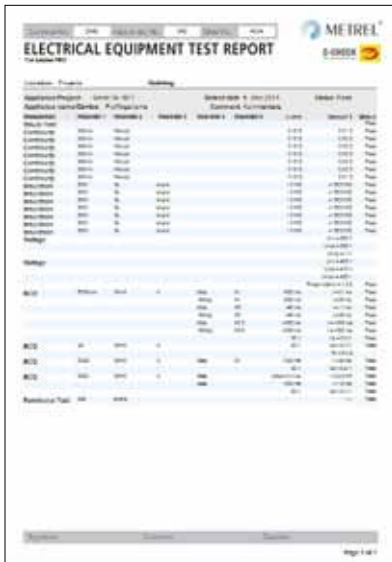
PC SW PATLink PRO is password protected for the following instrument:

- MI 3311

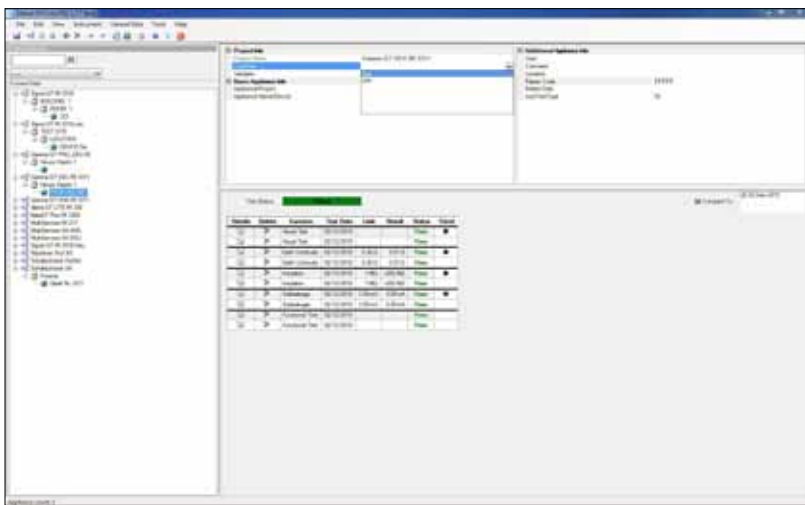
PC SW PATLink PRO Plus is password protected for all Metrel PAT testers.

Ordering information:

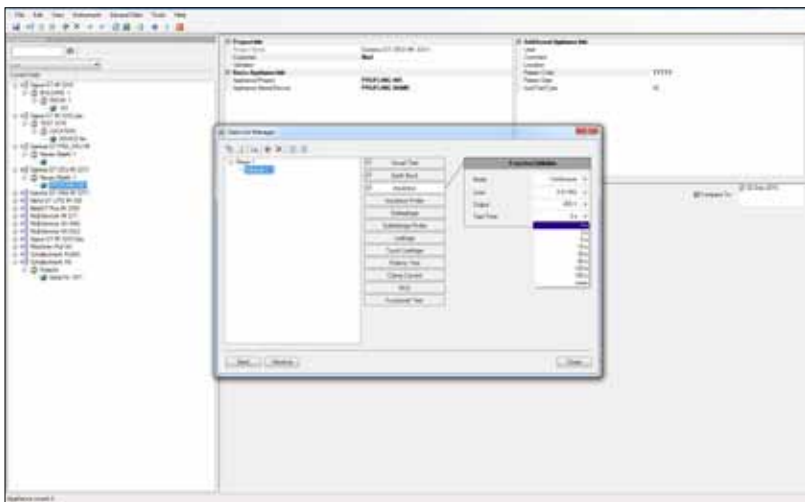
- A 1305 PC SW PATLink PRO with USB and RS232-PS/2 cable
- A 1306 PC SW PATLink PRO Plus with USB and RS232-PS/2 cable
- A 1203 Upgrade code PATLink PRO to PATLink PRO Plus



Full detailed PRO Report
and
Full detailed PRO Plus Report



Trend analysis (comparison of results from tests performed in different time period)



Custom autotest sequence can be created on PC and then uploaded to the instrument



METREL®
Measuring and Regulation Equipment Manufacturer
METREL d.d.
Ljubljanska 77
SI-1354 Horjul
Tel: + 386 (0)1 75 58 200
Fax: + 386 (0)1 75 49 226
E-mail: metre@metrel.si
<http://www.metrel.si>

Note! Photographs in this catalogue may slightly differ from the instruments at the time of delivery. Subject to technical change without notice.